

SEDIMENTATION AND
EROSION CONTROL PLAN

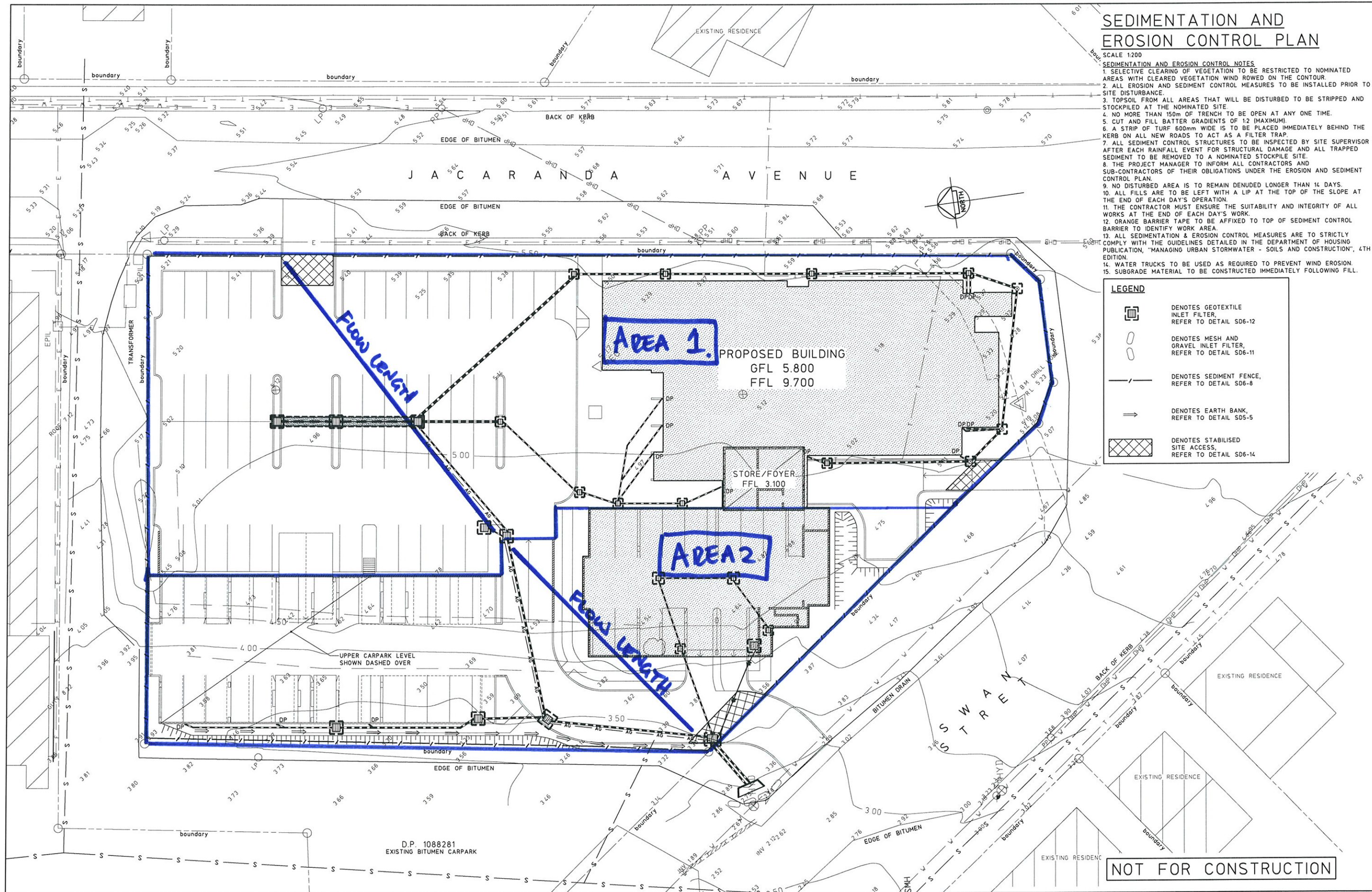
SCALE 1:200

SEDIMENTATION AND EROSION CONTROL NOTES

1. SELECTIVE CLEARING OF VEGETATION TO BE RESTRICTED TO NOMINATED AREAS WITH CLEARED VEGETATION WIND ROWED ON THE CONTOUR.
2. ALL EROSION AND SEDIMENT CONTROL MEASURES TO BE INSTALLED PRIOR TO SITE DISTURBANCE.
3. TOPSOIL FROM ALL AREAS THAT WILL BE DISTURBED TO BE STRIPPED AND STOCKPILED AT THE NOMINATED SITE.
4. NO MORE THAN 150M OF TRENCH TO BE OPEN AT ANY ONE TIME.
5. CUT AND FILL BATTER GRADIENTS OF 1:2 (MAXIMUM).
6. A STRIP OF TURF 600mm WIDE IS TO BE PLACED IMMEDIATELY BEHIND THE KERB ON ALL NEW ROADS TO ACT AS A FILTER TRAP.
7. ALL SEDIMENT CONTROL STRUCTURES TO BE INSPECTED BY SITE SUPERVISOR AFTER EACH RAINFALL EVENT FOR STRUCTURAL DAMAGE AND ALL TRAPPED SEDIMENT TO BE REMOVED TO A NOMINATED STOCKPILE SITE.
8. THE PROJECT MANAGER TO INFORM ALL CONTRACTORS AND SUB-CONTRACTORS OF THEIR OBLIGATIONS UNDER THE EROSION AND SEDIMENT CONTROL PLAN.
9. NO DISTURBED AREA IS TO REMAIN DENUDED LONGER THAN 14 DAYS.
10. ALL FILLS ARE TO BE LEFT WITH A LIP AT THE TOP OF THE SLOPE AT THE END OF EACH DAY'S OPERATION.
11. THE CONTRACTOR MUST ENSURE THE SUITABILITY AND INTEGRITY OF ALL WORKS AT THE END OF EACH DAY'S WORK.
12. ORANGE BARRIER TAPE TO BE AFFIXED TO TOP OF SEDIMENT CONTROL BARRIER TO IDENTIFY WORK AREA.
13. ALL SEDIMENTATION & EROSION CONTROL MEASURES ARE TO STRICTLY COMPLY WITH THE GUIDELINES DETAILED IN THE DEPARTMENT OF HOUSING PUBLICATION, "MANAGING URBAN STORMWATER - SOILS AND CONSTRUCTION", 4TH EDITION.
14. WATER TRUCKS TO BE USED AS REQUIRED TO PREVENT WIND EROSION.
15. SUBGRADE MATERIAL TO BE CONSTRUCTED IMMEDIATELY FOLLOWING FILL.

LEGEND

- DENOTES GEOTEXTILE INLET FILTER, REFER TO DETAIL SD6-12
- DENOTES MESH AND GRAVEL INLET FILTER, REFER TO DETAIL SD6-11
- DENOTES SEDIMENT FENCE, REFER TO DETAIL SD6-8
- DENOTES EARTH BANK, REFER TO DETAIL SD5-5
- DENOTES STABILISED SITE ACCESS, REFER TO DETAIL SD6-14



6 25% COMPLETION - STAGE 2			16.3.12	© Copyright MPC Consulting Engineers as date of issue			COPYRIGHT			 <div>Unit 28 Cooks Hill Commercial Centre, 235 Darby Street, COOKS HILL, NSW 2300 PO BOX 553 THE JUNCTION, NSW 2291 Tel: (02) 4927 5566 Fax: (02) 4927 5577 Email: admin@mpceng.com.au Web: www.mpcconsultingengineers.com.au A.C.N. 098 542 575</div>			CLIENT			PROJECT			DO NOT SCALE DRAWING							
5 REVISED D.A. APPROVAL			15.12.11	THIS DRAWING IS NOT TO BE USED FOR CONSTRUCTION UNLESS ENDORSED BELOW			The concepts and information contained in this document are the copyright of MPC Consulting Engineers. Use or copying of the document in whole or in part without the written permission of MPC Consulting Engineers constitutes an infringement of copyright.						HUNTER NEW ENGLAND LOCAL HEALTH DISTRICT			PROPOSED RAYMOND TERRACE HEALTHONE AT; JACARANDA AVENUE, RAYMOND TERRACE			DRAWN		ENGINEER		No in SET		SHEET	
4 REVISED CO-ORDINATION			13.12.11																L.S.		D.P.		26		A1	
3 TENDER			8.7.11																SCALES		JOB No		DRG No		ISSUE	
2 95% COMPLETION			24.6.11																1:200		11-179		C01		6	
1 CO-ORDINATION			10.6.11	DATE OF RELEASE			RESPONSIBLE PRINCIPAL SIGNATURE						ISSUE													
0 D.A. APPROVAL			21.3.11																							
ISSUE		REASON FOR ISSUE	SON & DATE DESIGN REVIEW	SON & DATE VERIFICATION																						

FULL SIZE ON ORIGINAL 0 1 2 3 4 5 6 7 8 9 10 11 12 13 14 15 cm